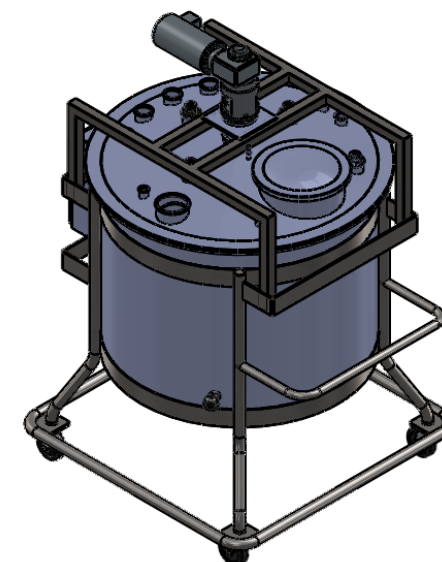


VOLUME (LITERS)	"A" (DIA)	"B" (HT)	MIXER
100L	19"	33"	1/4 HP DD OR GD
200L	22"	39"	1/4 HP DD OR GD
500L	30"	42"	1HP DD OR 1/3 HP GD
1000L	43"	58"	3 HP DD OR 1/2 HP GD
2000L	52"	66"	3 HP DD OR 1/2 HP GD
2500L	64"	67"	1/2-1 HP GD
3500L	67"	83"	1 HP GD
5500L	73"	94"	1-2 HP GD
7000L	80"	99"	1-3 HP GD
OTHER SIZES READILY AVAILABLE			



NOTES:

1. ALL MODELS AVAILABLE IN FDA APPROVED POLYETHYLENE, USP CLASS VI POLYPROPYLENE AND USP CLASS VI PVDF.
2. USP CLASS VI CERTS ON POLYPROPYLENE AND PVDF MODELS.
3. SEALED TOP COVERS W/ GMP O-RING, SOLID OR HINGED WITH HANDLE.
4. ASEPTIC TRANSITIONS.
5. POWDER COATED STEEL SUPPORT STANDS (STAINLESS STEEL OPTIONAL)
6. POWDER COATED MIXER MOUNTS (STAINLESS STEEL OPTIONAL)
7. OPTIONAL ITEMS: FLUSH MOUNT OUTLET VALVE, FLUSH MOUNT SAMPLE VALVE, CIP ASSEMBLIES, DIP TUBES, INSTRUMENTATION.
8. ALSO AVAILABLE: HYDRO TEST, MIXING RUN TEST, RIBOFLAVIN TEST.

CONFIDENTIAL: THIS DRAWING CONTAINS PROPRIETARY INFO. AND MAY NOT BE DISCLOSED TO THIRD PARTIES, OR REPRODUCED IN PAPER OR ELECTRONIC FORM WITHOUT WRITTEN PERMISSION FROM WHITE MOUNTAIN PROCESS

SHEET 1 OF 2



WHITE MOUNTAIN PROCESS
MIXERS, AGITATORS & BLENDERS 800-737-9619
www.wmprocess.com

TITLE

ENGINEERED & INTEGRATED
POLY MIXTANK PACKAGES

DRAWN
JPM

DATE
3/10/2013

UNLESS OTHERWISE SPECIFIED:
DIMENSIONS ARE IN INCHES
TOLERANCE: $\pm 1\%$

CAD FILE No.
WMP-0109

DRAWING No.
WMP-0109

REV
1.0

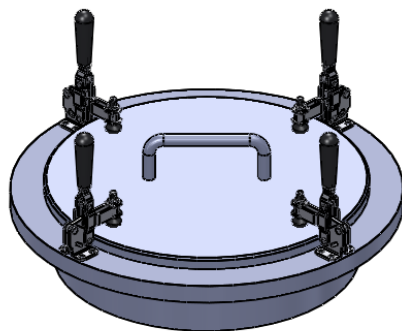


WHITE MOUNTAIN PROCESS

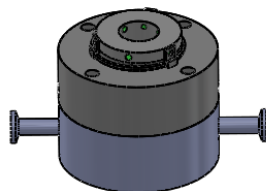
MIXERS, AGITATORS & BLENDERS 800-737-9619

www.wmprocess.com

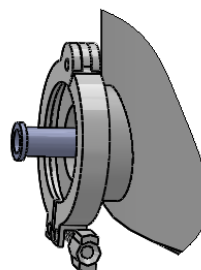
POLY/PLASTIC MIXTANK PACKAGES OPTIONAL ACCESORIES FOR YOUR MIX TANK



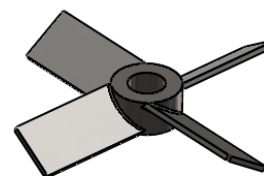
MANWAYS



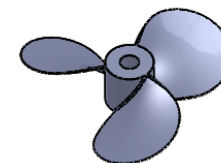
**ASEPTIC GMP
MECHANICAL SEAL**



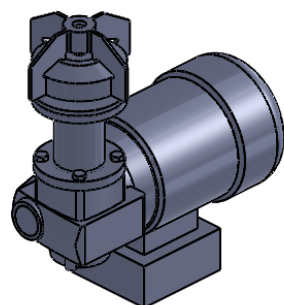
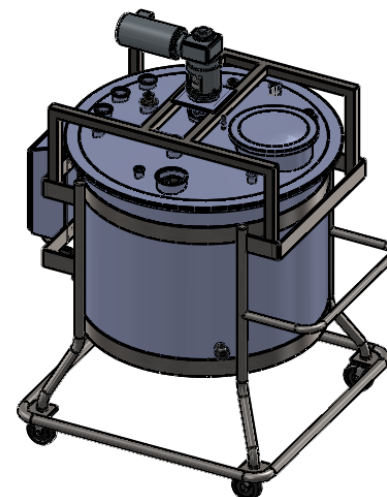
**FLUSH MOUNT
CONNECT**



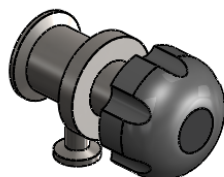
**TURBINE
IMPELLER**



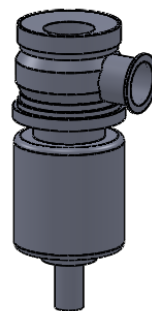
BIO PROP



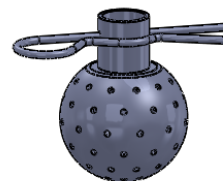
**BOTTOM
MOUNT MIXER**



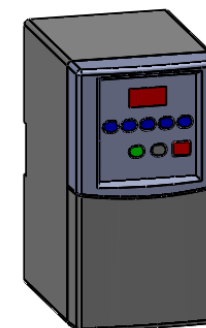
**SAMPLE
VALVE**



**NO DEADLEG
VALVES**



**SPRAYBALLS AND
RIBOFLAVIN TESTING**



**MIXER SPEED
CONTROLLER**

CONFIDENTIAL: THIS DRAWING
CONTAINS PROPRIETARY INFO.
AND MAY NOT BE DISCLOSED TO
THIRD PARTIES, OR REPRODUCED
IN PAPER OR ELECTRONIC FORM
WITHOUT WRITTEN PERMISSION
FROM WHITE MOUNTAIN PROCESS

SHEET 2 OF 2

DRAWN
JPM

DATE
3/10/2013



WHITE MOUNTAIN PROCESS
MIXERS, AGITATORS & BLENDERS 800-737-9619
www.wmprocess.com

UNLESS OTHERWISE SPECIFIED:
DIMENSIONS ARE IN INCHES
TOLERANCE: $\pm 1\%$

TITLE

ENGINEERED & INTEGRATED
POLY MIXTANK PACKAGES

CAD FILE No.
WMP-0109

DRAWING No.
WMP-0109

REV
1.0